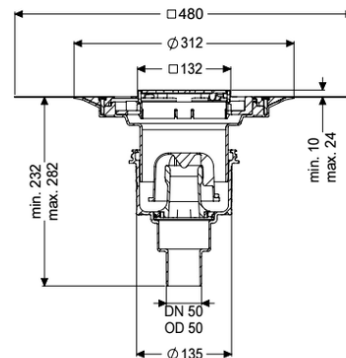
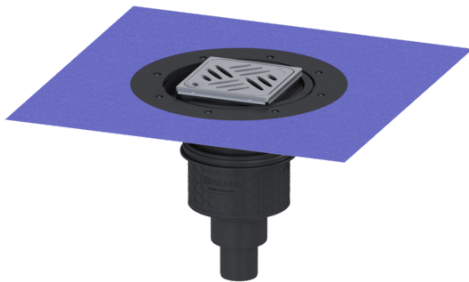


## Practicus floor/roof drain DN 50, vert., Waterpr layer, Des grate



### Article information

Item no.: 45250.53  
 GTIN: 4026092033838  
 Price group: 10

### Advantages

- Hygiene: hygienic, absolutely corrosion-free and durable material
- Sound insulation: outstanding sound insulation effect confirmed by the Fraunhofer Institute
- Fire protection: combinable with the Fire-Kit for fire and smoke protection

### Description

The Practicus floor drain is used for point drainage and is equipped with a connection flange as well as a removable odour trap, a lip seal and a temporary protective cover. Including telescopic height-adjustable upper section made of ABS. The drain meets particular sound insulation requirements in accordance with the measurements of the Fraunhofer Institute in Stuttgart. The outlet socket is suitable for connection to SML cast iron pipes. With connection option for equipotential bonding.

Variant

System:

Waterproofing layer on the upper section:

Waterproofing layer on the drain body:

Sealing water height:

Discharge rate (l/s) with 20 mm backwater:

125

Enclosed sealing collar to be glued (bd) according to DIN 18534

Connection flange

50 mm

2,2

General characteristics

Standard:

Nominal size (DN):

Outer diameter (OD):

Inlet max. scoring (DN):

EN 1253-1

50

50 mm

Z-19.53-2414,Z-19.17-1719

**Dimensions**

Vertical adjustment:	10 - 23 mm
Net weight:	2,41 kg
Gross weight:	3,2 kg
Vertical adjustment:	vertically adjustable upper section
Length:	135 mm
Width:	135 mm
Packaging dimension:	length
Packaging dimension:	width
Packaging dimension:	height

**Tank/drain body**

Number of outlets:	1
Material of drain body:	PP
System:	vertical

**Coverage features**

Type of cover:	Design cover
Cover material:	Stainless steel 14301
Colour of cover:	silver
Width of cover:	120 mm
Length of cover:	120 mm
Surface:	ground
Frame material:	Stainless steel 14301
Cover locking:	Lock & Lift
Load class:	L 15 (EN 1253-1)
Grating colour:	Kessel
Slip resistance class:	R9 according to DIN 51130; C according to DIN 51097
Rim length:	132 mm
Rim material:	132 mm
Upper section:	adjustable in three dimensions
Shape of upper section:	square
Upper section material:	ABS
Odour trap:	included